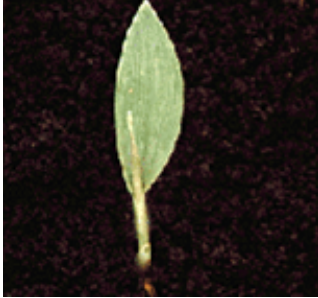


Grass Weeds



Texas Panicum

Common: Texas Panicum, (also known as Texas millet, coloradograss, buffalograss)

Scientific: *Panicum texanum*

Affected Crops: Corn, cotton, soybeans, tobacco

Identification: The seedling has a hairy leaf sheath and the leaf blades have hair on both sides. The plant has numerous, robust stems. Its grassy leaves can grow 2-8 inches long and are covered in soft hairs.

Geographical Distribution: Found from North Carolina to Florida and westward to Texas. This coarse summer annual may spread by creeping on decumbent stems rooting at the lower nodes. Found in moist, cultivated fields.

Always refer to product labels for specific use instructions.